

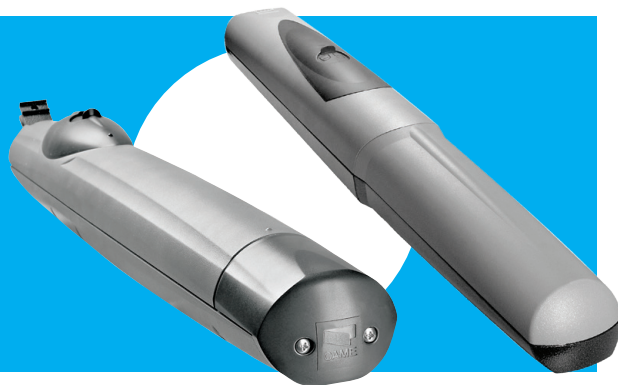
AMICO & AXO WORM DRIVE SWING GATE AUTOMATION



AMICO & AXO

Key release system

The AMICO & AXO worm drive swing gate operators have a manual release lock beneath a hatch on the top of the motors.



TO MANUALLY RELEASE THE GATES:



ALWAYS isolate the power supply as instructed by your installer (even during a power cut).



Release any additional locking device fitted to the gate (eg. electric lock etc).

A



INSTRUCTIONS



- 1** Open the lock cover cap remove.
- 2** Insert 3-sided triangular key **A** in the keylock, turn it fully to allow the release lever to unlock.
- 3** Lift the the lever up to the vertical position to release the gate mechanism.

To re-engage, close the gate and return the release lever to its original position, pushed completely back into place. Take the key out and replace the cap. Attempt to manually move the gate to ensure it is fully engaged.



BASIC INSTALLER MAINTENANCE

Hints & Tips



- Lubricate moving parts with suitable penetrating lubricant.
- Lubricate gate hinges.
- Manually release the gates at least once per month.